

## IRONIA E SEMPLICITÀ

MAIL, serie di applique disegnate da Alberto Saggia e Valerio Sommella, è protagonista dell'illuminazione di Casa Taide - l'innovativo progetto degli architetti Rui Vieira Oliveira e Vasco Manuel Fernandez realizzato a Taide, Póvoa de Lahnoso (Portogallo) e vincitore dei premi Architizer: A+ Award 2015 Jury Winner e A+ Awards 2015 Popular Choice Winner.

## IRONY AND SIMPLICITY

*Mail, wall lamp series designed by Alberto Saggia and Valerio Sommella, is protagonist of Casa Taide illumination - an innovative project by the architects Rui Vieira Oliveira and Vasco Manuel Fernandez realized in Taide, Póvoa de Lahnoso (Portugal) and winner of Architizer awards: A+ Award 2015 Jury Winner e A+ Awards 2015 Popular Choice Winner.*

## アイロニーとシンプルさ

「メール」は、アルベルト・サジヤとヴァレリオ・ソムメラによってデザインされたウォールタイプのランプ。このランプは、アメリカの建築・デザインWEBサイト「アルキタイザー (Architizer)」主催の「A+Awards」賞で審査員賞およびポピュラーチョイス賞の二つを受賞したプロジェクト「タイデ邸 (Taide House)」(設計: ルイ・ヴィエーラ・オリヴィエーラ+ヴァスコ・マヌエル・フェルナンデス/ポルトガル)に使用されました。

# MAIL / MAIL S

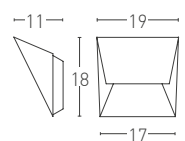
Design Alberto Saggia+Valerio Sommella

MAIL è l'ironica collezione di applique disegnata da Alberto Saggia e Valerio Sommella per LUMEN CENTER ITALIA. In queste pagine viene presentata nella versione "regular" (l 34 cm) e "small" (l 19 cm). Entrambe forniscono luce indiretta attraverso una sorgente LED o alogena ECO Energy Saver. MAIL e MAIL S sono disponibili in cinque diverse finiture: bianco opaco, grigio sabbia FT, grigio perla, foglia oro e foglia rame.

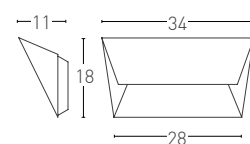
MAIL is the ironic collection of wall lamps designed by Alberto Saggia and Valerio Sommella for LUMEN CENTER ITALIA. In these pages it is presented in its "regular" (l 34 cm) and "small" (l 19 cm) versions. They both produce indirect light using a LED system or an ECO Energy Saver halogen light source. MAIL and MAIL S are available in five different finishes: matt white, sand grey FT, pearl grey, gold foil and copper foil.

「メール」は、アルベルト・サッチャとヴァレリオ・ソンメッラがルーメンセンター・イタリアのためにデザインしたシニカルな作品。このページでは、レギュラーサイズ（幅34 cm）とスモールサイズ（幅19 cm）の製品を紹介します。両方ともLED光源とエコハロゲン・エナジーセーバーのランプの二種類を取り揃えています。「メール」と「メール S」は、以下の五種類の塗装から選ぶことができます。ホワイト半光沢、サンド・グレーFT、パール・グレー、金箔仕上げ、銀箔仕上げ。

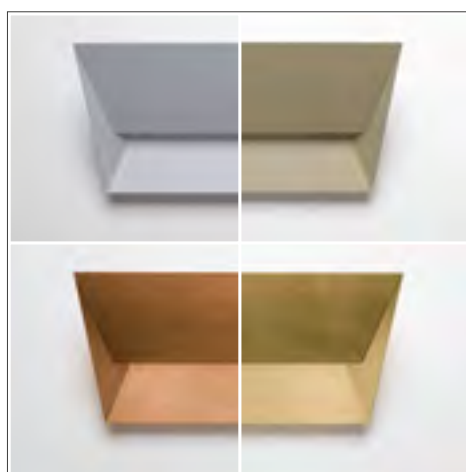
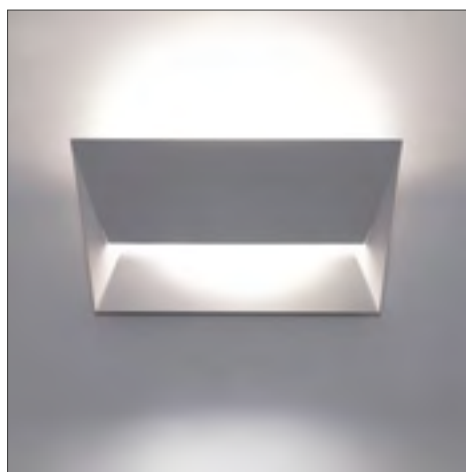
## MAIL S



## MAIL



Units: cm



### Finishes

- 106 Matt white
- 115R FT Sand grey
- 123 Pearl grey
- 130 Gold foil
- 132 Copper foil

### Electronic driver

MAIL S LED Drive included  
MAIL LED Dimmable driver included TRIAC

### Light source LED

MAIL S LED  
LED 9,2W 220/240V  
780lm 3000K CRI>90

MAIL LED  
LED 25W 220/240V  
2320lm 3000K CRI>90

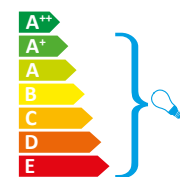


### Suggested light source



MAIL S G9 Halogen ECO  
max 1x60W

MAIL R7s Linear Halogen ECO 114,2 mm  
max 1x230W

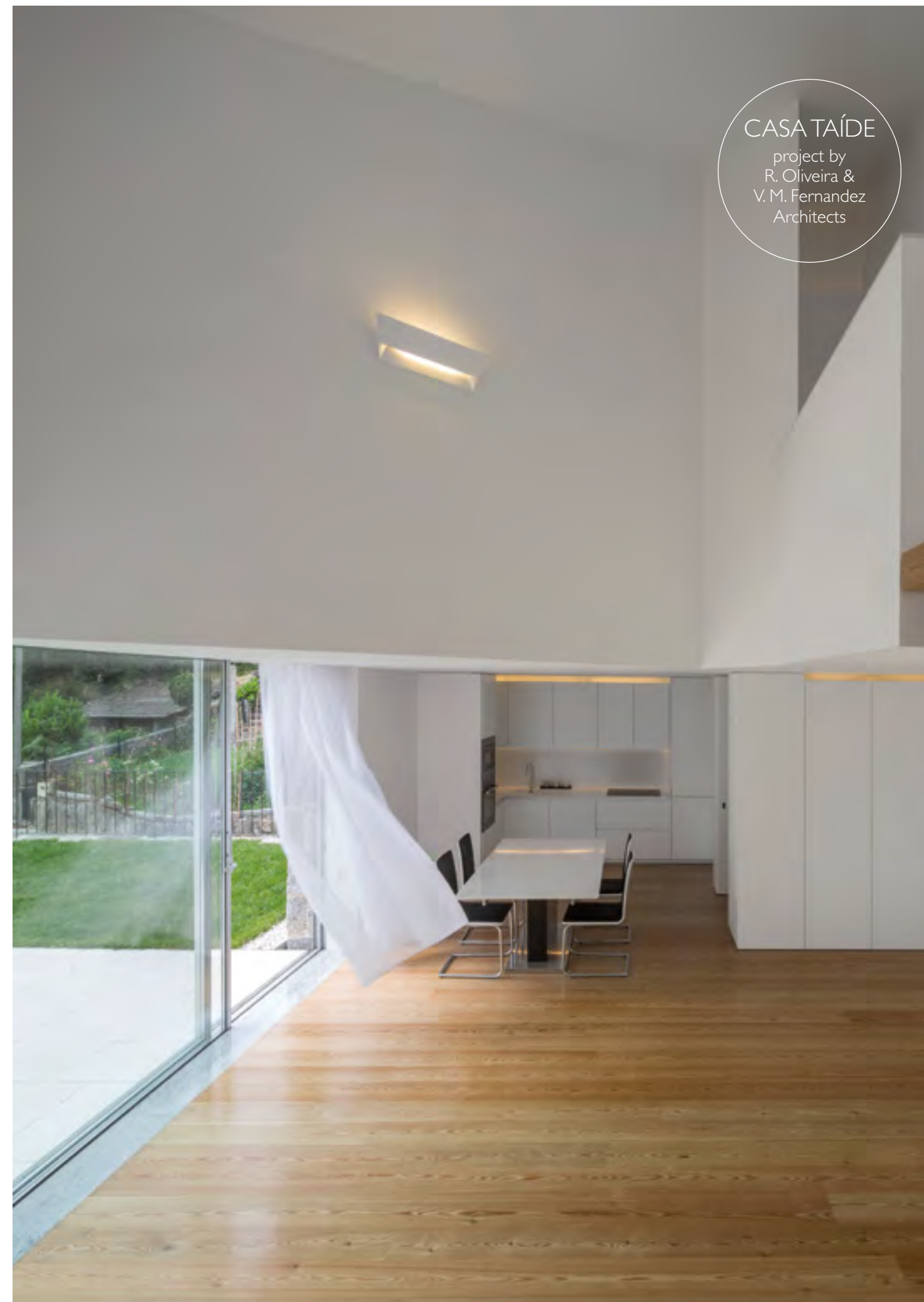


### Certification



## CASA TAÍDE

project by  
R. Oliveira &  
V. M. Fernandez  
Architects





# MAIL L/XL

Design Alberto Saggia+Valerio Sommella

MAIL L e XL nella versione "large" (l 56 cm) e "extra large" (l 81 cm). Utilizzano sorgenti LED o fluorescenti ECO Energy Saver.

Disponibili in cinque diverse finiture: bianco opaco, grigio sabbia FT, grigio perla, foglia oro e foglia rame.

MAIL L and XL in "large" (l 56 cm) and "extra large" (l 81 cm) versions with embedded LED or Ecoflu light source.

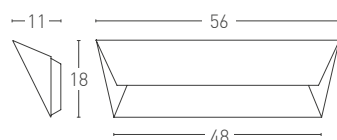
Available in five different finishes: matt white, sand grey FT, pearl grey, gold foil and copper foil.

「メールL」と「メールXL」は、ラージサイズ（幅56 cm）とエクストラ・ラージサイズ（幅81 cm）の製品です。両方ともLED光源とエコハロゲン・エナジーセーバーのランプの二種類を取り揃えています。以下の五種類の塗装から選ぶことができます。ホワイト半光沢、サンド・グレーFT、パール・グレー、金箔仕上げ、銀箔仕上げ。

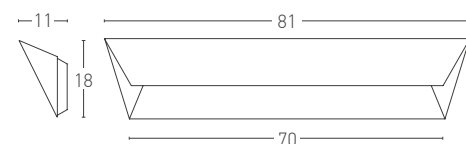
CASA TAÍDE

project by  
R. Oliveira &  
V.M. Fernandez  
Architects

MAIL L



MAIL XL



Units: cm



## Finishes

- 106 Matt white
- 115R FT Sand grey
- 123 Pearl grey
- 130 Gold foil
- 132 Copper foil

## Electronic driver

Included for LED version only:  
Dimmable TOUCH DIM, DALI

## Light source LED

**MAIL L LED**  
LED TOTAL POWER 40W 220/240V  
3765lm 3000K CRI>90

**MAIL XL LED**  
LED TOTAL POWER 60W 220/240V  
5650lm 3000K CRI>90

**A**

## Light source

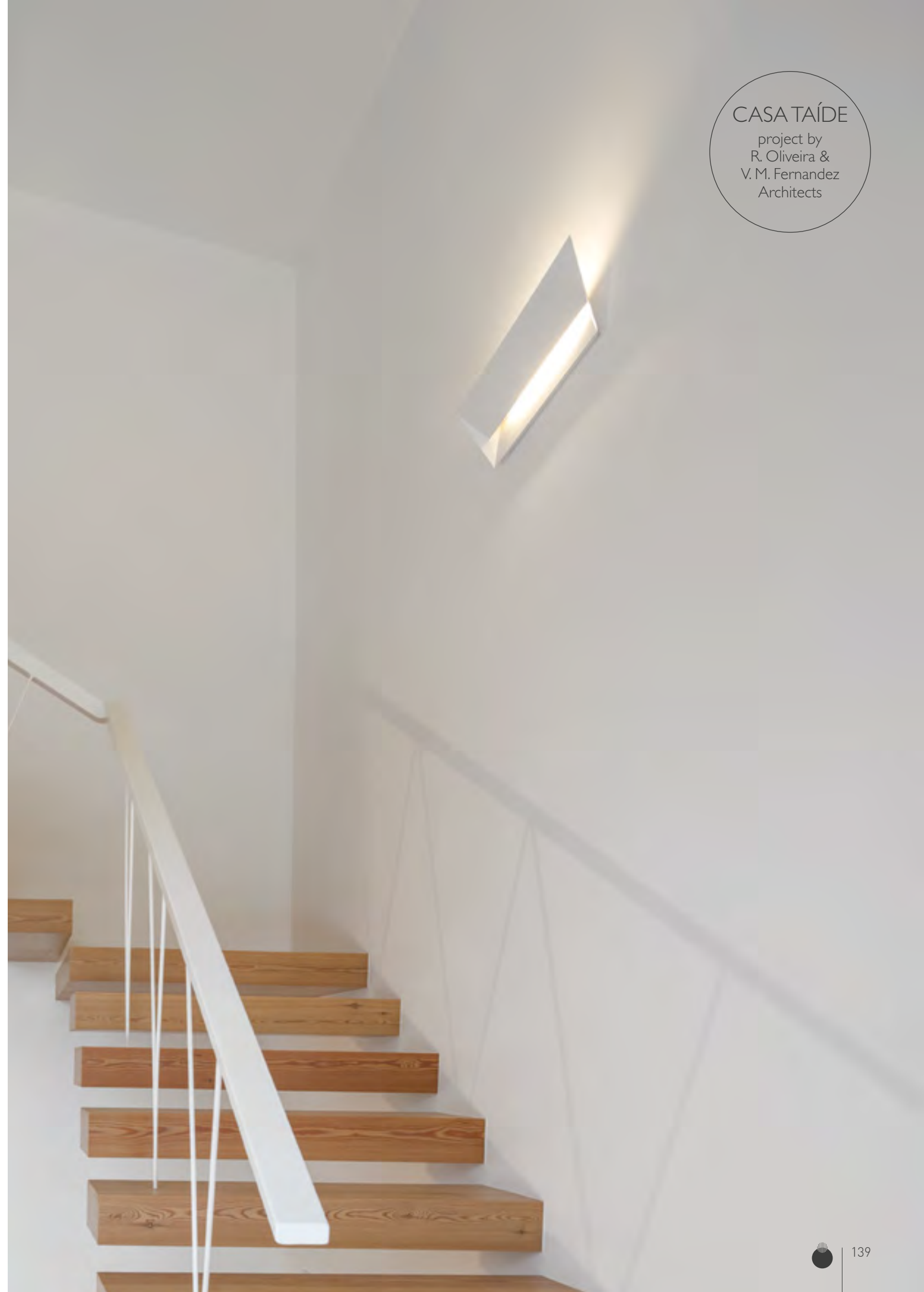
**MAIL L**  
ECO Fluo 2G11 220/240V  
1x24W 1800lm 3000K **AL.EL.**

**MAIL XL**  
ECO Fluo 2G11 220/240V  
1x55W 4800lm 3000K **AL.EL.**

**A**

## Certification

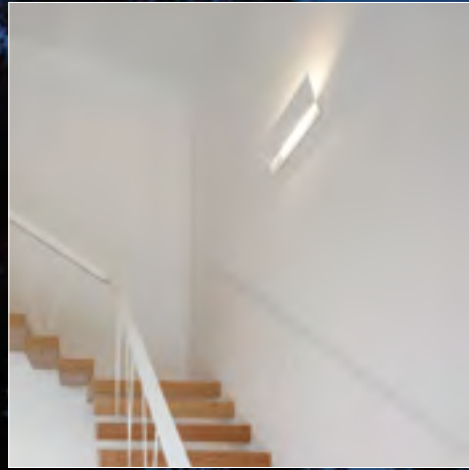
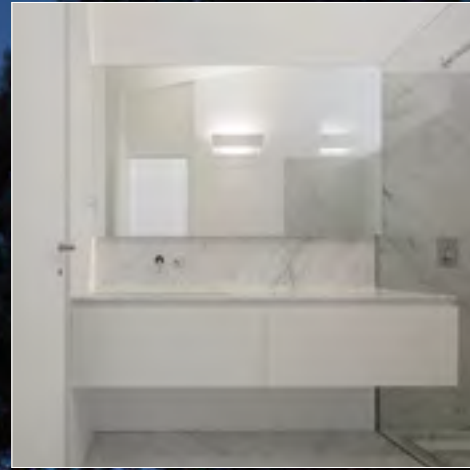
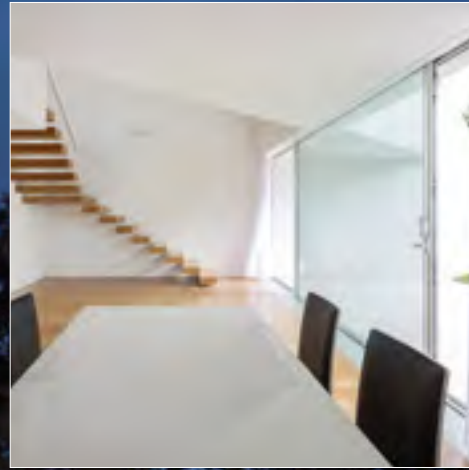
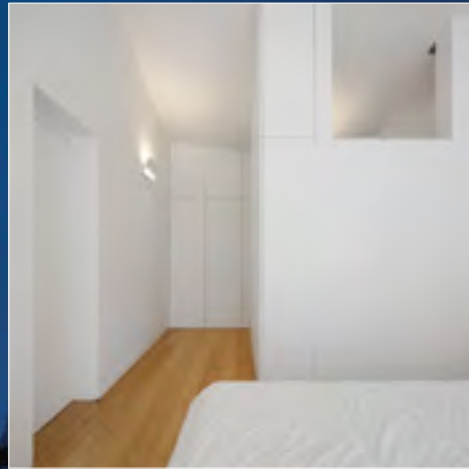
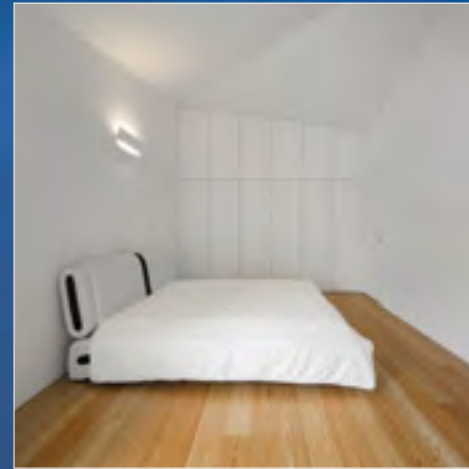
**CE EAC** IP20 Classe I





# MAIL

Design Alberto Saggia+Valerio Sommella



CASA TAÍDE  
project by  
R. Oliveira &  
V. M. Fernandez  
Architects